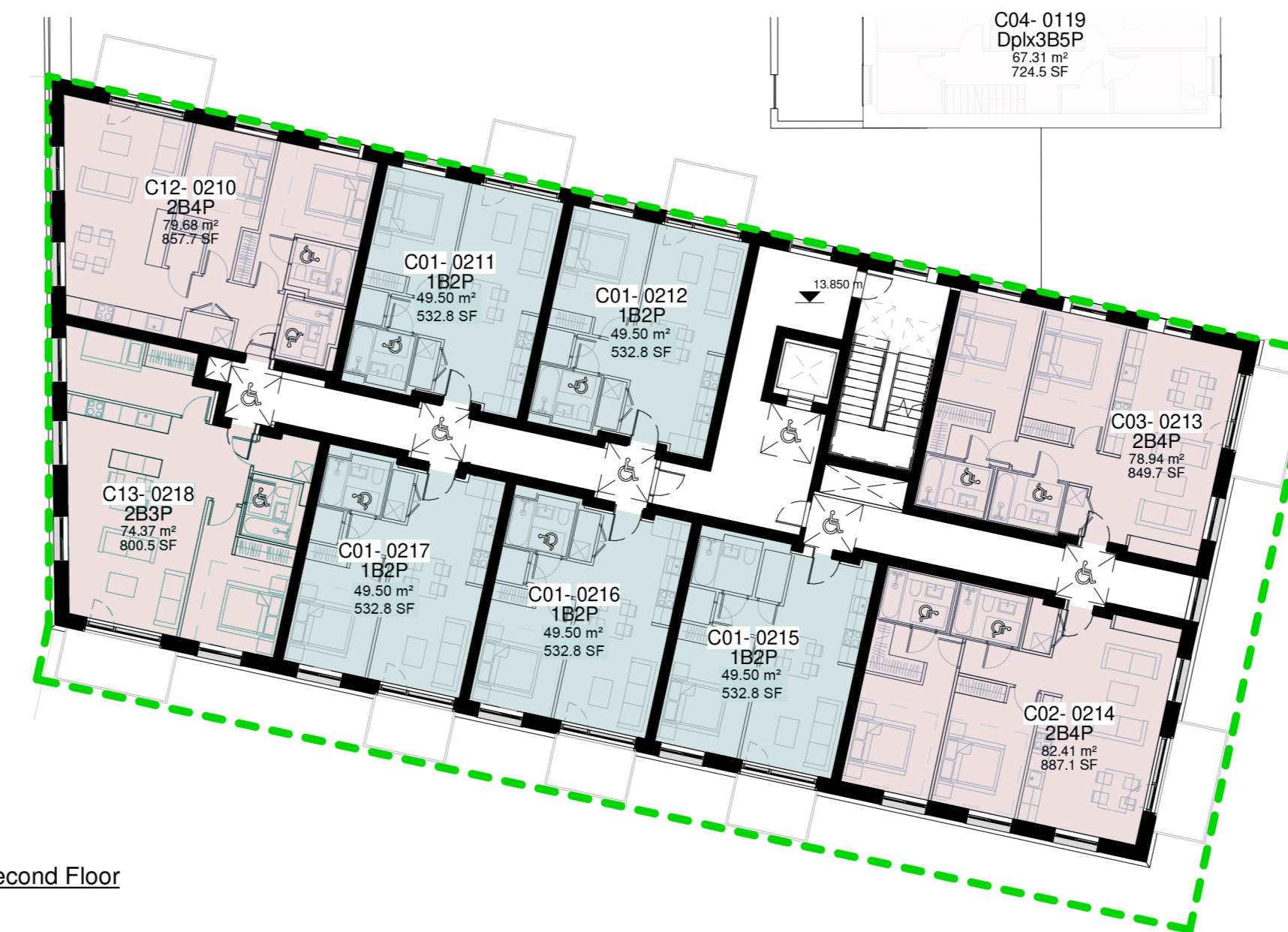
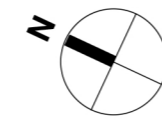




Part V-Block C First Floor
Scale 1:200

Part V_Schedule	
Department	Count
L01 - First Floor	
1B2P	5
2B3P	1
2B4P	3
	9
L02 - Second Floor	
1B2P	5
2B3P	1
2B4P	3
	9
L03 - Third Floor	
1B2P	5
2B3P	1
2B4P	3
	9
L04 - Fourth Floor	
1B2P	5
2B4P	2
	7
Total	34



Part V-Block C Second Floor
Scale 1:200



Part V-Block C Third Floor
Scale 1:200



Part V-Block C Fourth Floor
Scale 1:200

Notes & Key

DIMENSIONS NOT TO BE SCALED FROM THIS DRAWING.
CONTRACTORS TO NOTIFY ARCHITECTS OF SITE
VARIATIONS AFFECTING INFORMATION ON THIS DRAWING.
THIS DRAWING IS COPYRIGHT OF GLENN HOWELLS
ARCHITECTS.

Please note information relating to the existing elements within
this site should be treated as indicative and must be confirmed
through accurate site measurement before being relayed upon.

This drawing has been produced without the use of a measured
survey. Glenn Howells Architects cannot guarantee the accuracy
of the information generated regarding its relationship to the site or
surrounding area. The information contained within this drawing
should be treated as indicative.

Glenn Howells Architects take no responsibility for the location of
legal boundaries indicated on this drawing and advise a separate
drawing be completed by a specialist Surveyor to establish exact
boundaries.

O.S Data from sheet number
1:1000: 3568-03
1:1000: 3568-04
1:1000: 3568-06
1:1000: 3568-09
1:1000: 3568-13
1:1000: 3568-14
Ordnance Survey Licence Number
CYSL50286263
© Ordnance Survey Ireland/Government of Ireland
All levels are given in metres and are referred to O.S.
Datum Malin Head Co. Donegal (1970 Adjustment)
Centre Point Coordinates X,Y = 726576,719356

Site Area = 0.812 Ha

KEY

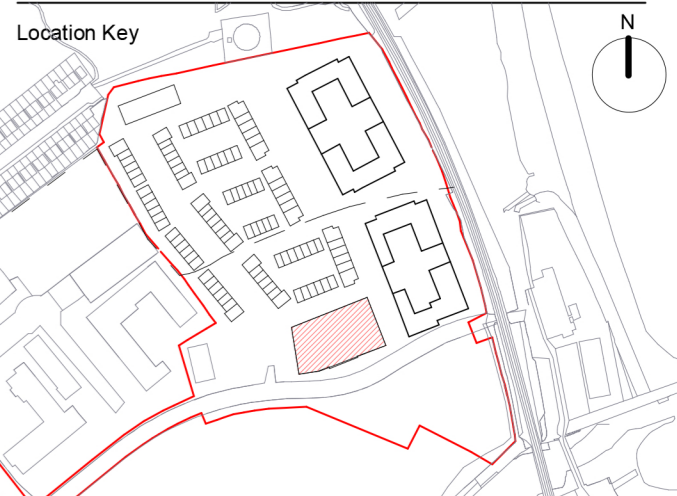
- 1 Bed Apartment
- 2 Bed Apartment
- 3 Bed Apartment
- Duplex Apartment



METRES
@ 1:200

Revisions

Date	Rev	By	Description
02/08/2022	P01	MP	Issued to Client



PLANNING ISSUE

Project: Coastal Quarter SHD 2
GHA No.: 2244

Client: Shankill Property Investments Limited

Drawing Title: WCC - Part V

Drawing No.: BRA-GHA-Z1-XX-DR-A-04002
Revision: P01

Scale: 1:200@A1
Date: 02.08.22
Checked: DK

Glenn Howells Architects
321 Bradford St, Birmingham, B5 6ET
T. +44 (0)121 666 7640 E. mail@glennhowells.co.uk